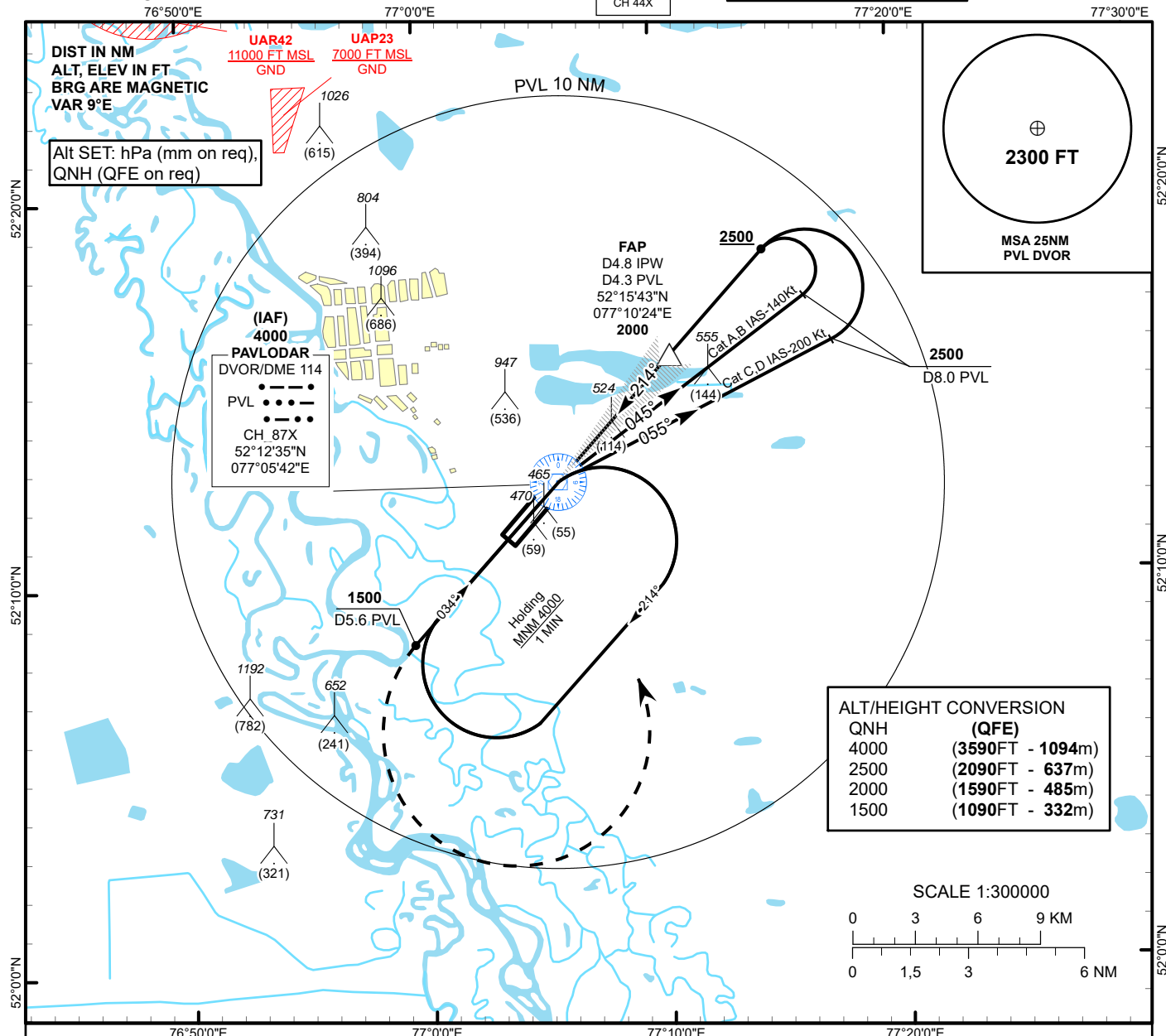


INSTRUMENT
APPROACH
CHART - ICAOAERODROME ELEV 411 FT
HEIGHTS RELATED TO
THR RWY 21 - ELEV 410 FTILS
LLZ 110.7
IPW
GP 330.2
CH 44XPAVLODAR TOWER 119.8
PAVLODAR ATIS (EN) 134.6
PAVLODAR ATIS (RU) 133.6PAVLODAR
ILS/DME Z
RWY 21

MISSED APPROACH

Climb on track 214°
to 1500 or above
outbound to 5.6 PVL.
Turn LEFT to PVL.
Climb initially to 2500,
then as directed by ATC.
RADIO FAILURE: in case
of RCF climb to 4000 to
PVL and join holding
pattern. Missed approach
turn speed limited to 240 Kt
IAS maximum.

ILS RDH 51

ELEV 410
THR RWY 21

IAF 4000

DVOR/DME
PVLFAP
D4.3 PVL
D4.8 IPW
2000

2500

TRANSITION ALT
10000

GP 3.0°

214°

214°

CHANGE: GP 3°, recal, renamed.

Aircraft Category		A	B	C	D	DIST to THR DME IPW	NM	1	2	3	4	4.8	
Straight-in Approach OCA/H						DME PVL	NM	0.5	1.5	2.5	3.5	4.3	
	CAT I	610(200)		610(200)		ALTITUDE	FT	748	1038	1328	1621	2000	
						HEIGHT	FT	(338)	(628)	(918)	(1211)	(1590)	
DME IPW ZERO RANGED TO THR RWY 21													
Aerodrome Operating Minima DH ft x RVR(CMV)	ILS CAT I												
						GS	Kt	80	100	120	140	160	180
						Desc.Rate(5.2%)	ft/min	420	530	630	740	840	950

PAVLODAR
ILS/DME Z

AERONAUTICAL DATA TABULATION

ILS/DME approach to RWY21 from PVL DVOR/DME	
Fix/point	Coordinates
(IAF) DVOR/DME PVL	52°12' 34.6"N 077° 05' 42.1"E
(FAP) D4.8 IPW, D4.3 PVL	52°15' 42.8"N 077° 10' 24.5"E
THR RWY21	52° 12' 12.95"N 077° 05' 08.58"E
LOC IPW	52° 10' 54.5"N 077° 03' 10.8"E